



A Touchstone Energy® Cooperative



RENVILLE-SIBLEY

SEPTEMBER 2025 VOL. 26 NO. 5

COOPERATIVE CONNECTIONS



Antler Shed Hunting

**Shed Hunter Kelly
O'Bryan**

Pages 8-9

Artificial Intelligence

Pages 12-13

*Photo submitted by
Kelly O'Bryan*

2024 Margin Allocated to Renville-Sibley Members



Amy Ervin
Executive Admin
and HR

As a member of Renville-Sibley Cooperative Power Association, you own a portion of the cooperative. One of the many ownership benefits is receiving an allocation of the cooperative's margin. Generally, cooperatives operate at cost. That means the goal of a cooperative is to collect enough revenue to run and expand the business, without overcharging the membership.

Any excess revenue is allocated back to the membership in the form of capital credits. This allocation is based on the amount of electricity each member consumed during the year. The 2024 allocation information will be located on the August statement. Past members who received electricity from Renville-Sibley in 2024 and no longer have an active service with us will receive their allocation notice in the mail.

Please remember, this allocation is not payable now and

does not represent cash, but rather your equity in the cooperative. You cannot apply this amount to your electric bill. Renville-Sibley uses the allocated, but unretired capital credits to improve and expand our electric system and meet our other capital needs. This reduces our need to borrow money and helps us provide reliable electric service to the membership.

When the co-op's financial condition permits, the co-op retires, or pays, the capital credits to members in cash. Allocating and retiring margins to members helps distinguish the difference between cooperatives and other utilities. Renville-Sibley is proud to support our communities by putting money back into the local economy—and into the pockets of those we serve. The best way to ensure you receive this allocation when it is retired is to keep your mailing address up-to-date with the cooperative.

A common question regarding the allocation and retirement of capital credits is if this amount should be reported to the IRS. Renville-Sibley recommends members visit with their tax advisor on this matter.

★ ★ ★ ★ ★
★ ★ ★ ★ ★
★ ★ ★ ★ ★
★ ★ ★ ★ ★

HAPPY LABOR DAY

★ ★ ★ ★ ★
★ ★ ★ ★ ★
★ ★ ★ ★ ★
★ ★ ★ ★ ★

**Renville-Sibley Cooperative
Power Association will be
CLOSED on Monday, September
1st in observance of Labor Day.**

NNNN



Renville-Sibley Co-op Power
515 Hwy 212 W
PO Box 68
Danube MN 56230-0068

A Touchstone Energy® Cooperative

Phone: (320) 826-2593 Toll Free (800) 826-2593
Office Hours: 8:00 a.m. to 4:30 p.m. Monday-Friday
www.rscpa.coop

ANY MEMBER
12345 ELECTRIC ROAD
ANYWHERE MN 56565



This institution is an equal opportunity provider and employer.

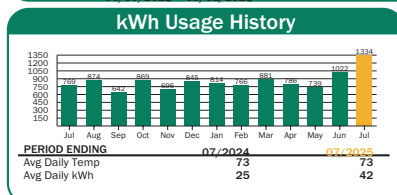
Statement Date	08/09/2025
Account Number	123400
Payment Due	09/03/2025

Service Summary	
Previous Balance	\$162.00
Payment Received 08/03/2025	Thank You! -\$162.00
Balance Forward	\$0.00
Current Charges	\$195.00
Total Amount Due	\$195.00

Message from your Co-op	
August member events include Farmfest and Family's Fair night. Remember to bring the coupon from the newsletter with you to Farmfest so you can be registered for a prize drawing. More information on both of these events can be found in the Cooperative Connections newsletter.	

Map Location: 9876543 Service Location: 12345 ELECTRIC ROAD Substation: ELECTRIC

Meter No.	Services	From	To	Days	Previous	Present	Meter Multiplier	kWh Usage	Rate Description
8824816		06/30/2025	08/01/2025	32	50365	51699	1	1334	GENERAL SERVICE
1824888		06/30/2025	08/01/2025	32	7988	8262	1	274	CONTROLLED AC



Capital Credit Statement

Total Patronage for 2024			\$1,455.84
Category	Unretired Balance	2024 Allocation	TOTAL
RSCPA	\$2,001.01	\$88.17	\$2,089.18
East River	\$516.03	\$40.90	\$556.93
Basin	\$822.90	\$29.30	\$852.20
TOTAL	\$3,339.94	\$158.37	\$3,498.31

Current Service Detail

Balance Forward		\$0.00
GENERAL SERVICE		
Customer Charge		\$42.00
Energy Charge	1060 kWh@ 0.1202	\$127.41
Water Heater Credit		-\$6.50
CONTROLLED AC		
Sub Meter Charge	274 kWh@ 0.06	\$2.50
Energy Charge		\$16.44
Total Electric Charges		\$181.85
Minnesota Sales Tax		\$12.50
Operation Round Up		\$0.65
Other Services & Credits		\$13.15
Total Electric, Other Services & Credits		\$195.00
Total Amount Due 09/03/2025		\$195.00
Total Amount Due After 09/03/2025		\$197.92

KEEP

SEND Please do not staple or paperclip.

ANY MEMBER
12345 ELECTRIC ROAD
ANYWHERE MN 56565

☐ Please check here and complete the appropriate section on the reverse side to update your Mailing Address, Phone Numbers, or Email.

Account Number	123400
Total Due 09/03/2025	\$195.00
Total Due After 09/03/2025	\$197.92

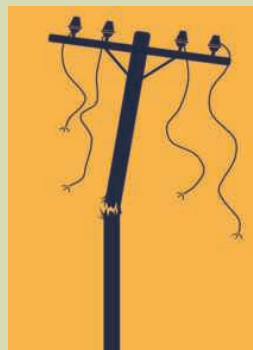
RENNVILLE-SIBLEY CO-OP POWER
PO BOX 68
DANUBE MN 56230-0068



250720000499200000019500000019792080420221

Safety Note

If your machinery or vehicle comes in contact with a power line, do not get out of the cab. Call 9-1-1 and the dispatched utility will de-energize the power so that you can safely exit your tractor or vehicle.



COOPERATIVE CONNECTIONS

RENNVILLE-SIBLEY CO-OP POWER

(USPS 019-074)

Board of Directors

Whitey Hinderman – Chair
Roger Manthei – Vice Chair
Vicky Firl – Secretary/Treasurer
Jeff Boersma
Gary Eekhoff
Alan Neyers
Gary Peterson
Helen Ruebel
Wayland Zaske

Renville-Sibley Employees

Gene Alex – Line Superintendent
Brian Athmann – Journeyman Lineman
Shawn Beckler – Crew Chief
Mike Benson – Journeyman Lineman
Brad Braulick – Crew Chief
Nick Bruns – Technology Manager
Anthony Carruth – Journeyman Lineman
Amy Ervin – Executive Admin and HR
Brayden Fischer – Journeyman Lineman
Carren Frank – Cooperative Support Specialist
DeeAnne Norris – CEO
Clint Olson – Journeyman Lineman
Marc Snyder – Cooperative Analyst
Jill Woods – Member Services Professional

RENNVILLE-SIBLEY COOPERATIVE CONNECTIONS is published monthly by Renville-Sibley Co-op Power Association, 515 Highway 212 W, Danube, MN, 56230 for its members. Electric cooperative members devote 75 cents from their monthly electric payments for a subscription. Periodicals Postage Paid at Danube Post Office, Danube, MN 56230 and at additional mailing offices. POSTMASTER: Send address changes to: Renville-Sibley Cooperative Connections, PO Box 68, Danube, MN 56230; Telephone (320) 826-2593; Toll Free 1-800-826-2593; Fax (320) 826-2679.

Web site: www.rscpa.coop

This institution is an equal opportunity provider and employer.

Emergency Preparedness: Are You Ready for a Disaster?

Source: National Safety Council

National Preparedness Month, sponsored by the Federal Emergency Management Agency and held annually in September, is a good reminder that natural and man-made disasters can strike at any time. It's important to have a planned response when you're at work, on vacation or on the road.

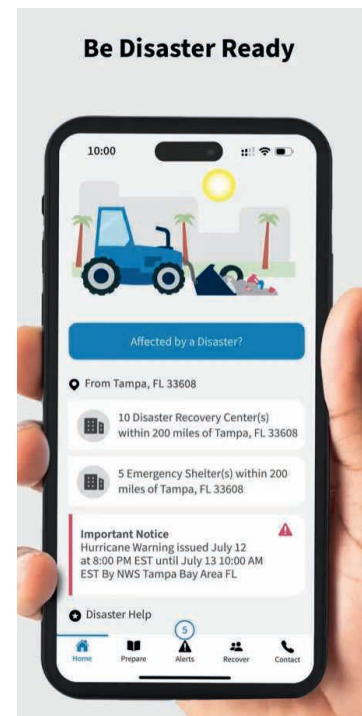
In 2022, 69,473 weather-related events resulted in 813 deaths and 1,718 injuries. Winter weather, heat, floods and hurricanes resulted in the most deaths that year, according to Injury Facts.

The National Safety Council offers safety tips specific on preparing for earthquakes, floods, hurricanes and tornadoes, and how to minimize fire risks.

Federal agencies, like Ready.gov and the National Oceanic and Atmospheric Administration also are valuable resources for emergency preparedness. When you face a natural or man-made emergency, try to stay informed through radio, TV or the Internet. In some cases, however, cable, electric and cell phone service will be disabled, making communication nearly impossible. The National Safety Council recommends the following general precautions that apply to many disaster situations:

- Make sure at least one family member knows first aid and CPR.
- Download the FEMA app for resources, weather alerts and safety tips.
- Have a family communication plan in place; all members of the family should review and practice the plan.
- Have all family members' and other important phone numbers written down or memorized.
- Have an emergency kit in your car and at least three days of food and water at home.
- Be sure to store all important documents – birth certificates, insurance policies, etc. – in a fire-proof safe or safety deposit box.
- Know how to shut off utilities.

The official FEMA mobile app offers critical resources and real-time alerts to help you prepare for emergencies, stay safe during disasters, and navigate recovery afterward. With features like customizable emergency checklists, shelter locations, disaster recovery centers, and direct access to emergency alerts, the app is a comprehensive tool for personal and family safety planning.



"Don't drive tractors into power lines."

Darcy Welsh, Age 9

Darcy cautions readers while driving tractors near power lines. Great picture, Darcy! Darcy's parents are Ryan and Rachel Welsh from Oral, S.D.

Kids, send your drawing with an electrical safety tip to your local electric cooperative (address found on Page 3). If your poster is published, you'll receive a prize. All entries must include your name, age, mailing address and the names of your parents. Colored drawings are encouraged.

Fruit SPECIALS

FROZEN FRUIT FIESTA

Ingredients:

1 6-oz. frozen orange juice concentrate
2 10-oz. frozen strawberries
2 cans pineapple with juice (1 tidbits, 1 crushed)
3-4 bananas, sliced
1/4 cup lemon juice
1 cup sugar
1 1/2 cup cold water

Method

Mix all together in a large bowl. Freeze in individual cups. Set out at room temperature for 1-2 hours before serving.

Optional: pour sour or 7-Up on top before serving.

Ginny Jensen
Sioux Valley Energy

PEACH RHUBARB CRISP

Filling:

3/4 cup sugar
3 tbsps. flour
1/2 tsp. nutmeg
1/8 tsp. salt
3 cups rhubarb (sliced, fresh or frozen)
2 1/2 cups chopped fresh or frozen unsweetened peaches

Topping:

1/2 cup flour
1/2 cup oatmeal
1/2 cup brown sugar
3/4 tsp. cinnamon
1/8 tsp. salt
5 tbsps. butter (cold)

Method

Combine the filling ingredients and fruit. Transfer to a greased 11"x7" baking dish. In a small bowl, combine the topping ingredients; cut in butter until mixture resembles coarse crumbs. Sprinkle over fruit. Bake at 375°F for 30 to 35 minutes until bubbly and browned.

*Recipe can be cut in half and bake in 8" x 8" pan.

Sally Florey
Charles Mix Electric

CHERRY ICE CREAM DESSERT

Ingredients:

1 1/2 cup Rice Krispies, crushed
1/4 cup brown sugar
1/4 cup melted butter
1 cup grated coconut
1/4 cup chopped nuts
1-quart vanilla ice cream
1 cup cherry pie mix

Method

1. Melt butter in frying pan. Add coconut and toast, stirring constantly as it burns easily. Cool
2. Add nuts, brown sugar and crushed rice Krispies. Mix together.
3. Press 2/3 of crumb mixture into a buttered 9x9 inch pan.
4. Soften ice cream and spread over crumb mixture then top remaining crumbs.
5. Freeze well. Cut in squares and top with cherry pie mix.
6. Can be served with any other toppings. Serves 6-8.

Rowena A. Wipf
Northern Electric

Please send your favorite recipes to your local electric cooperative (address found on Page 3). Each recipe printed will be entered into a drawing for a prize in December 2025. All entries must include your name, mailing address, phone number and cooperative name.

Farm and Ranch Safety: Top Tips to Protect Kids

Farms and ranches give kids unique opportunities to gain responsibility, independence and strong work ethics. Growing up on a farm helps children develop problem-solving skills, build close family bonds, gain respect for the food cycle and cultivate a deep passion for the land.

However, agriculture is also one of the most dangerous industries for youth in the U.S. More young people die working in agriculture than in all other industries combined, with a child lost to an agriculture-related incident approximately every three days. Many of these tragedies occur when kids take on tasks that aren't suited to their age or abilities.

The impact of a farm injury or fatality extends beyond the individual, affecting families and entire communities. The emotional and mental toll can last a lifetime, underscoring the importance of making safety a priority for everyone.

By implementing safety strategies, farmers, ranchers, families and employees can reap the benefits of farm and ranch life while minimizing risks

Why are kids at greater risk?

Injuries often occur when children are doing something beyond their mental, physical or emotional abilities. They are susceptible to certain types of accidents and injuries:

- Children often work on farms at young ages and in hazardous jobs.
- Their bodies and brains are still developing, affecting coordination, decision-making and impulse control.

- Kids tire easily, are more likely to get distracted (think cell phones and social media) and may take risks to prove themselves.
- Many lack experience and may be reluctant to ask questions or admit uncertainty



Five essential farm safety tips for kids:

1. **Keep kids off tractors.** Tractors are involved in more than 40% of fatal farm accidents involving children under 15. Most kids are not tall or strong enough to operate them safely. Only let youth operate one if they meet safety guidelines for age, size and maturity.
2. **Supervise and restrict access.** Young children should never be in work areas unsupervised. Fence off or lock hazardous areas like grain bins, animal pens and equipment storage.
3. **Assign age-appropriate tasks.** Match chores to the child's abilities and maturity. Teens are more likely to take risks, so clear guidelines and supervision are essential.

4. **Create a safe environment.** Remove hazards such as slippery or uneven surfaces, keep equipment keys out of reach and avoid repetitive motion. Provide protective gear like gloves, non-slip shoes and hearing protection.

5. **Train and model safe behavior.**

Teach kids how to do tasks safely, practice together until they are proficient and always demonstrate safe habits yourself. Kids learn by watching adults

Farm safety starts with open communication

Talk regularly with your kids about farm safety. Clearly explain which areas are off-limits, how to spot hazards and why following rules is important. Frequent, open conversations help build safe habits and encourage kids to think before they act.

Conduct safety audits of your farm, ranch and home together. Identifying and fixing hazards not only protects your children but also helps them learn how to prevent injuries.

Supervision is key. Always keep an eye on children, especially around potential dangers. Remember, learning safe habits takes time and patience — be prepared to repeat instructions to encourage smart, lasting and safe work habits.

For more tips on assigning safe farm tasks to kids, check out the Agricultural Youth Work Guidelines at CultivateSafety.org/AYWG.

Farming is more than a job; it's a way of life. By making safety a family priority, we can help ensure that future generations enjoy the rewards of farm life with fewer risks.

SUBMIT A LOCATE REQUEST

▶ ▶ ▶ Twin Cities Metro: (651)454-0002 ▶ ▶ ▶ Greater MN Area: (800)252-1166

...or go online at

www.gopherstateonecall.org



Get the



Dirt

WHAT YOU NEED TO KNOW **NOW** ABOUT EXCAVATION SAFETY

Welcome to the Excavator Safety Guide, Minnesota edition! 2016 brings a number of changes to Gopher State One Call (GSOC) that will provide excavators with new and easy to use technology for excavation ticket processing. These changes are intended to keep the basic goal of damage prevention in clear focus. See the custom pages in this guide for important information about both the new electronic ticket system and basic facts that will help you dig safely in Minnesota, this time and every time.

Inside You'll Find...

- ▶ An Overview of GSOC's Technology Suite
- ▶ Who Should Call 811? Don't Forget, Farmers!
- ▶ The Process for Safe Excavation
- ▶ What Doesn't Get Marked: Private Lines
- ▶ Get *the Scoop* on the GSOC Team



**Know what's below.
Call before you dig.**

Gopher State One Call is the nonprofit corporation formed in 1987 by the enacting of Minnesota Statutes Chapter 216D. GSOC ensures the safety of all Minnesotans by receiving notices of intent to excavate from any person engaged in excavation activity and notifying underground facility operators who have requested notification in the areas of excavation.



Kelly O'Bryan of Winner shows off his impressive collection of deer and elk sheds alongside his shed-hunting Labrador, Skye. Photos submitted by Kelly O'Bryan

SHED HUNTING

Prairie Miles and Antler Piles

Frank Turner

frank.turner@sdrea.coop

Rosebud Electric member Kelly O'Bryan of Winner regularly hikes mile after mile of open prairie in search of the perfect shed. But he isn't looking for a place to store his garden tools or lawnmower – instead, he's after antlers. Each spring, deer and elk naturally shed their antlers, leaving behind prized treasures for shed hunters like O'Bryan to find.

O'Bryan jumped into the shed hunting hobby in 2020, during the social distancing months of the pandemic, after a friend invited him on a shed hunt in Montana. When O'Bryan found his first deer shed, he uncovered more than just a pair of antlers – he discovered a new passion.

"It was during the time when you couldn't go out and do anything, so you just had to make your own fun and find stuff to do," he laughed. "I just fell in love with covering as many miles as I possibly could each season, trying to pinpoint sheds. It's just like an Easter egg hunt."



O'Bryan lifts an elk shed found in Montana. Submitted Photo

Shortly after, O'Bryan fully committed to the hobby and added the ultimate scavenger to his team: a white lab named Skye. According to O'Bryan, it didn't take long for the dog to become an invaluable shed-hunting partner.

"I got Skye as a puppy, and I knew as soon as I got her, I

would train her to be a shed dog,” he said. “I taught her to sit and stay while I hid sheds all around the house. When she found one, I would give her lots of positive reinforcement. She figured it out just like that.”

Since then, O’Bryan and Skye have become seasoned shed hunters. In 2024 alone, the pair found 152 whitetail sheds, 25 mule deer sheds, nine elk sheds and 16 complete skulls – called “dead heads” – which resemble an English-style mount. Many of their best finds come from long days spent in remote country, often covering 10 to 15 miles in a single outing.

O’Bryan’s collection of sheds has grown into an impressive heap of bone and tines that continues to grow each season. Like many in the shed hunting community, he has found creative ways to showcase his finds with his most festive being an antler-adorned Christmas tree.

Others in the shed hunting community use their collection for art projects, crafting everything from knife handles to chandeliers. Some even trade or sell antlers to crafters, collectors, or pet product makers, giving shed hunting both recreational and economic appeal. Although O’Bryan does not sell his finds, he does cut up broken and damaged antlers for dog chews, gifting them to friends, family and his own favorite shed-hunting friend.

O’Bryan also has a few tips for beginners, drawn from miles of experience.

He says spring is the best time to search – antlers are freshly shed, and the grass is still short enough to give hunters a clear view. A good pair of binoculars is another must-have, helping spot antlers from a distance when the terrain allows for a higher vantage point.

And once you’ve found one shed, don’t assume the hunt is over. Whitetail deer are often in groups and antlers are often dropped in pairs so it’s worth taking the time to thoroughly scan the surroundings.

“You aren’t going to be finding many sheds unless you are willing to put on the miles,” he said. “The more you hike, the more you are likely to find sheds.”

More photos of O’Bryan’s collection and other hunting trophies can be found on his Instagram page: @db_huntin.



(Above) O’Bryan praises Skye for a lifetime of discovering antlers.
(Below) O’Bryan and Skye show their white tail antler finds from a winter shed hunt. *Submitted Photo*

Outstanding Capital Credit Checks

Listed below are Renville-Sibley members who were mailed a capital credit check in December of 2018 and have either not cashed the check or the check was returned to our office due to an old address. If you know the correct address or telephone number for these members, please contact Renville-Sibley Co-op Power at 800-826-2593. If no contact is made with these members, the money is paid out to students through our scholarship program. 776200

ALARCON JOSE
ALLEN RICHARD J
ALLTEL COMMUNICATIONS
ALONZO DAVID
ALONZO KIM
AMERICAN BANK
ARNDT DANITA
AZURE LAWRENCE
BAUMANN ALEX
BAUMANN FRANCES
BEAGER TODD
BECKER DON
BERNARDY DEBRA
BIOTHANE CORP
BITKER JANET
BLACKWELL JEREMY
BLEICK CHARLES JR
BLUE MICHAEL
BLUE SHANNON
BLUE THERESA
BLUME DAVID
BORTH REUBEN
BOYUM RUSSELL
BRELJE JERRY
BROEFFLE DIANE
CARLSON DUSTHAN
CARNES WILLARD
CASE CHARLES E
CHAPMAN BRENT
CHAPMAN JEANNIE
CHIQUITA PROCESSED FOODS
CLARKE JEFF
COLUMBUS CLYDE
COLUMBUS GLEN
CROOKS CHERI
CRUM EDDIE
CULBERTSON JANET M
DALLENBACH JON
DALLENBACH VICKY
DECLERCQ JAMES
DECLERCQ JIM
DECLERCQ ROBERT
DEVRIES COREY
DISNEY PATRICK
DONNER JASON
DONYES ROBERT
DRIGGINS DUANE
DUIS BONNIE
DWORSHAK PAM
EDWARDS JOHN
EISEL RICK
ELFERING CHRIS
ELLISON WM
EMERALD HELICOPTERS
EVANS LEAMON JR
FISCHER DEBRA
FISCHER GERALD
FOLEY MATT
FOSS JUDY
FOUSEK VERNON
FRANK MARGARET

FREDRICKSON CARY
FREITAG GARY
FRIESE LYNN
FRONTIER CROP TESTING
GARNHARDT JONAH
GARZA JAVIER
GERHARDT DAN
GILCHRIST MARK
GNEISS VALLEY AGGREGATES
GRUNKE KEITH
GUDGEL JAMES
GURTZ DAVID
HAAS TONYA R
HALE TIM
HALVORSON JOLENE
HAM KELLY
HAMMRE FRANCIS
HANSON DENISE
HARING KEVIN
HAUG PAUL
HAUGEN JAMIE
HEIMERMAN JAMES
HELMUTH WILLIAM JR
HELMUTH WILLIAM SR
HILL CATHERINE S
HILLESHEIM CHRISTINE
HINDERMANN FARM TRUST
HOEFFNER FARMS
HOLSTAD JAMES
HOLZBAUER OWEN
IVERSON DOROTHY M
JAEGER MIKE
JAHNKE DEB
JAIME ARMONDO
JANSSEN REBECCA
JENSEN BEN
JENSEN DORIS M
JOHNSON JO
JONES LARRY
KADING HELEN
KANNIAINEN ROBERT
KIECKER AMBER L
KIENHOLZ DOUG
KING GARY
KNUTSON ERVIN
KOHLER DARWIN
KOPLIN ANGIE
KORDOVSKY DAN
KORMENDY CLARICE M
KORSMO BEN
KORSMO DONALD
KRAMER DUSTIN
KRUEGER RUTH
KUELBS ELEANORA
KURTH MATTHEW P
LAMKA BRIAN
LARSEN DAVID
LARSEN SANDRA
LARSON PAUL H
LEE ALAN
LEPP KAYLA

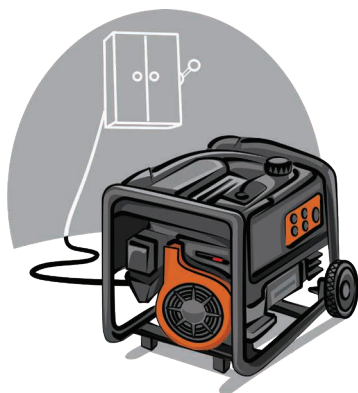
LINDE MICHELLE
LINDQUIST WALLACE
LOTHERT DEAN
LOTHERT DENNIS S
LOVERUDE DEB
LUEPKE KATHY
LULUQUISIN GENEVER
LYLE TOM
MAIERS WAYNE
MALLON MIKE
MARCUS LEE
MARK TWAIN CABLEVISION
MARLOWE GORDON
MARTI JON
MARTIN JERRY
MARXEN BILL
MAURICE VERLIN
MEIER ALVIN
MEMS CONNIE
MENZ JEREMY
MERTENS JEFF
MERTENS JOEL
MEYER JACK
MEYER JEREMY
MEYER MARTHA
MIDWEST WIRELESS COMMUNI-
CATION
MIKOSCH JEFF
MILROY SALLY
MINNESOTA VALLEY MINERALS INC
MORARIE MARK
NELSON BRITTANY
NELSON JAMES E
NERUD BRENDA
NEUBECK CHARLES DSR
NEWHOUSE DOUG
NYQUIST FRED
OLIVAS JOSE
OLIVIA CANNING CO
OLSON ERNEST
PALUSKA JEFFREY
PASCHKE KEVIN
PAULSEN RANDY
PETERSON TOM
POIRIER GARY
POPPEN LOREN
PRESCOTT LARRY
PRESCOTT MARTIN
PRIBBLE RONALD
RADDATZ MARJORIE
RAMSDELL BRIAN
RECK LEONARD
RECK MAXINE
REGNIER TONYA
REID MARY
REINS JENNIFER
REMAX TODAY'S REALITY
RESEMIUS STEVE
RHAM ED
RICE JOHN C
RING CARL

ROBERTS GLEN
ROBERTSON DON
ROEBKE ALAN
ROLFSMEIER DOMINIC
ROOD DAN
RUTER ED
RUTER KENNETH
SALINAS ERASTO JR
SCHICK MARCELLA
SCHICKERT DIANE
SCHMIDT CHARLES
SCHNEIDER MARK
SCHROEDER WILLIAM
SCHULTZ LEE
SCHWEISS FARM INC
SCRABECK MICHAEL
SEABURG JUSTIN
SENKYR BERNICE
SENKYR GLEN
SJOLIE KEITH
SKORNICKA SARA
SMITH ARCHIE
SMITH MICHAEL
SOMMERS COREY
SOO LINE RAILROAD
SOWDER J B
SOWDER RUTH
SQUIBB RAFA
STANDFUSS MARLYS W
STAR CABLEVISION
STEINKAMP ROGER
STILLSON RAE
STOLTENBURG KYLE
SVOBODA PETER
SWANSON JOHN
SWARD ROGER
SWENSON BRYAN
SWENSON DAN
SWENSON SCOTT
TOSTENSON BRAD
TROTTER DUFFY
UNIVERSAL ENSCO INC
VALENTIN KARL
VAVRICKA GEORGE W
VIG JIM
VOLKMANN ADAM
WALBERG TROY
WALLIN LINDA M
WHITELEY JAMES J
WILLING STEPHEN R
WOLD NANCY
WOLFE DAN
WRIGHT MEAGHAN
WURZBURGER HARGV
YOUNG GREG
YOUNG ROBERT
YOUNGER PAUL
ZACHOW AMMIE
ZILLER MARGARET

Standby Generator – Keep Safety in Mind When Using Standby Generators

While owning an emergency generator comes in handy during an extended power outage, you must consider the following.

To safely use standby generators, operate them only in well-ventilated areas outdoors so emissions can't enter your home. In addition, always turn off a generator when refueling it, and store gasoline, diesel fuel, or propane outside



of living areas. Plug appliances directly into a generator or use an extension cord. Do not try to power a home's wiring by plugging the generator into a wall outlet.

A permanently installed standby generator for a home or business requires a transfer switch to isolate it from the power grid. The main breaker on an electric panel does not qualify as a transfer switch under the National Electrical Code.

Transfer switches are critical for two reasons:

- They prevent the backflow of current across distribution lines that could electrocute lineworkers trying to restore power during an outage.
- They protect the generator from damage when electric service has been restored.

The installation of a standby generator should be done by a licensed electrician and must comply with the National Electrical Code as well as state and local codes.

Energy Star Rebates

Renville-Sibley offers rebates to members who purchase the following Energy Star-certified appliances for their home: refrigerator, freezer, dishwasher, clothes washer, clothes dryer, dehumidifier, central air-conditioner, room air-conditioner, and LED light bulbs.

To qualify for the rebate, the unit must be currently Energy Star certified. Occasionally, Energy Star changes their qualification of what is certified. Therefore, what was Energy Star certified last year or even last month, may or may not be currently Energy Star certified due to a change in the requirements. Renville-Sibley would like to remind members to verify that the appliance they are purchasing is currently Energy Star certified by visiting the Energy Star website www.energystar.gov.

Once on the website, click on the Find Products tab at the top of the page and then click on the appliance you are interested in purchasing. Next, click on "Explore Models" and search by the brand of the appliance you are purchasing. Renville-Sibley also uses this website to verify that the appliance is currently Energy Star certified before issuing the rebate. This website has a host of other information to assist members in becoming energy efficient.

Rebate forms can be found on Renville-Sibley's website www.rscpa.coop/energy-star-rebates. **Rebates must be submitted within 90 days of purchase.** Please contact the office if you have any questions on rebates or on Energy Star products.

OUTAGE REPORT:

Affecting 10 members or more

Date: 6-2-2025

Time off: Various between 4:50 and 10:53 PM

Time on: Various between 7:56 PM and 10:32 AM on 6-3-2025

Substation: Wellington, Cairo, Henryville, Troy, Brich Cooley

Cause: Wind

Date: 6-6-2025

Time off: 7:59 AM

Time on: 9:20 & 10:27 AM

Substation: Wellington, Cairo

Cause: Broken Clamp

Date: 6-10-2025

Time off: 11:00 AM

Time on: 12:27 PM

Substation: Wellington

Cause: Prearranged

Date: 6-28-2025

Time off: 10:20 AM

Time on: 11:50 AM

Substation: Birch Cooley

Cause: Unknown

Date: 6-28-2025

Time off: 11:04 PM

Time on: 12:10 AM on 6-29-2025

Substation: Wellington

Cause: Lightning

Please contact Renville-Sibley's office for more details about these power outages.

FOR SALE

Maple or Ash firewood. \$100 per cord.

Bill Schafer

Renville, MN 56284

320-826-2350



HARNESSING AI

Electric Cooperatives Explore What's Next for AI

Frank Turner

frank.turner@sdrea.coop

Artificial intelligence (AI) is becoming an increasingly popular tool for many industries and even in our daily lives. It has the potential to bring many opportunities, and a few challenges, to electric cooperatives. But machine learning takes time, and cooperatives are still in the process of determining how AI can be effectively used.

Like any new technology, AI brings with it a mix of potential and uncertainty. It's a hot topic — sometimes exciting, sometimes a little intimidating. But for electric cooperatives, the focus isn't on the buzz. It's on the basics: What problems can it solve? What efficiencies can it create? And how do cooperatives make sure they are using it safely?

That measured, practical approach is what's guiding East River Electric Power

Cooperative, a wholesale power supply cooperative which serves 25-member distribution systems in eastern South Dakota and western Minnesota, as it explores how AI might support the operations of its member cooperatives now and into the future.

Right now, most electric cooperatives in South Dakota have not yet integrated artificial intelligence into their operations or systems. But that doesn't mean the technology is being ignored. Across the state, many co-ops are watching AI developments closely, asking questions, and exploring how these tools might be used in the future. The focus remains on learning first — before implementing anything that could affect system reliability or member service.

At East River Electric Power Cooperative, that learning process is already well underway. According to Jeff May, chief information officer with East River Elec-

tric, the co-op has spent the past several years researching what AI has to offer. Their approach has been to identify practical, secure applications that could help improve efficiency, support employees in their day-to-day work, and ultimately benefit members.

"With the explosion of AI applications and models for both personal and professional uses, we've been exploring ways that East River Electric and our members can harness the power of AI while making sure that our data is secure from a cybersecurity perspective," said May.

Because AI technology has the potential to interact with both internal systems and external networks, cybersecurity is a top priority. As South Dakota rural electric cooperatives look to adopt tools powered by AI and other tech, they will ensure their systems are safe from potential cyber threats. Strong digital defenses are essential for the safe use of any new technology.

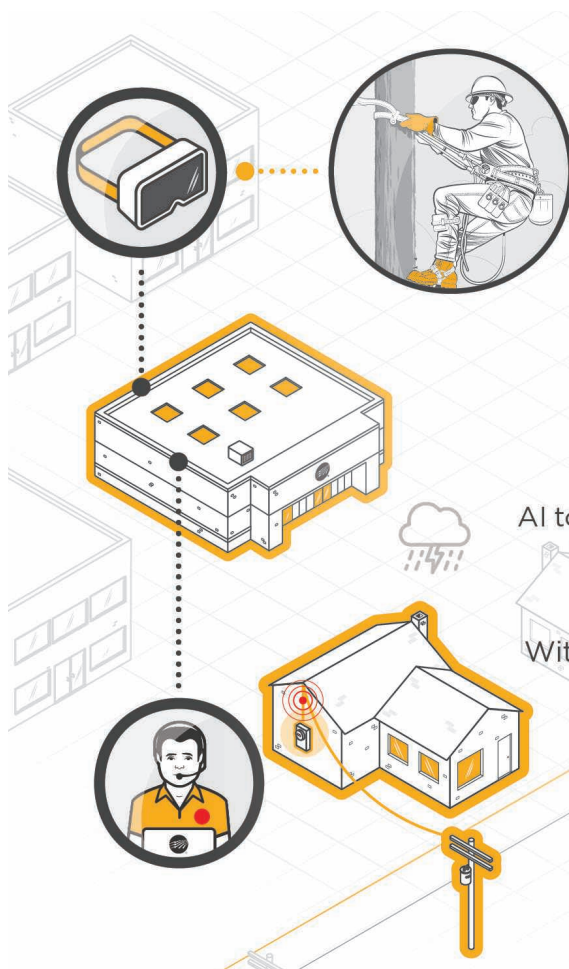
With safety in mind, May said East River Electric is actively partnering with Dakota State University graduate students to see how AI can be safely utilized by electric cooperatives. Together, East River Electric is working with the school to build an AI model that can predict electricity usage based on weather conditions and other factors to support the cooperative's load forecasting and rate forecasting capabilities. Although the technology is still in its infancy, May said he expects that someday AI will play a significant role in an electric cooperative's daily operations, including load forecasting, outage response and maintenance planning.

"It's difficult to predict how AI can be used for different types of jobs, but it will certainly become common throughout the organization as we learn all of the things AI can do," he said. "If it can be used to make our employees more productive and have a positive impact on the organization and our members, we will consider it. In some areas it could become commonplace within the next year, but throughout the cooperative it could take 3 to 5 years or more to be fully integrated in a safe and secure way."

Beyond grid operations, East River Electric is also trying out Microsoft CoPilot, an AI-powered assistant built into programs like Word, Excel, Outlook and Teams. A few employees are currently testing it to see how it might improve productivity and workflow, especially in communications and marketing departments.

Ultimately, if AI can streamline a process, predict an issue or improve service for electric cooperative members, May said it's worth considering. AI can be another tool in the cooperative tool belt that can make energy more reliable, services faster and operations more efficient.

"Over the next 5 to 10 years, AI's role in electric cooperatives is poised to grow significantly, driven by the need for efficiency, grid reliability and sustainability amid rising energy demands and technological advancements," said May. "Just the advancements that have been made in the last three years have been astounding to watch, and as more and more data centers and large language models are built in the coming years, it will become something that cooperatives likely use on a daily basis."



AI PUT INTO ACTION

Electric cooperatives are already using artificial intelligence (AI) and augmented reality (AR) for key tasks and activities. Looking ahead, co-ops see great potential for AI and AR as helpful tools for improving grid reliability and the services they provide to consumer-members.

SERVICES FOR MEMBERS

AI tools like chatbots can enhance member interactions and provide a tailored experience based on energy use data.

WEATHER FORECASTING

With the help of AI, weather forecasts will become more accurate, pinpointing areas to station utility crews.

EDUCATIONAL OPPORTUNITIES

Through augmented reality, or AR, lineworkers can experience interactive, lifelike trainings, rather than watching a video or webinar.

July Board Meeting Highlights

The July board meeting was held on Tuesday, July 22nd, 2025 at 8 a.m. All board members were present. Others present were CEO DeeAnne Norris, Gene Alex, Amy Ervin, and Carren Frank.

The board reviewed and approved the following items:

- Minutes of the June 24, 2025 board meeting
- Operating and disbursement reports for the month of June
- Director Expenses
- Safety Report for July
- CoBank Director Election and Nominating Committee Candidates
- Allocation of 2024 Margin
- Policy 105 - Board Compensation

The board reviewed the following items:

- Total new members
- Capital Credits Transferred

- Reports from staff members as to the activities in their department. Items in the reports include:
 - High-level Statement of Operations review – YTD through June (unaudited)
 - Organization activities
 - East River update
 - Director meeting reports
 - Linecrew work in progress, equipment update, and outage update
 - Accounts receivable
- Operation Round Up, Brick to recognize donation

Please contact the Renville-Sibley office if you would like more information regarding the board meeting.

WHERE'S THE NUMBER?

Last month RSCPA member did not find their member number in the newsletter. The value of the energy credit will be increased to \$90. Another number has been hidden in this newsletter. If you find your number and call the office by the 2nd of September, you will receive this credit on your electric statement. Good luck in your search!

REMINDER

Renville-Sibley encourages any member planning on making changes to their service in 2025 or 2026 to please contact the office as soon as possible. In order to complete these projects on time, material may need to be ordered well in advance as often there is extended lead time to get the appropriate material. In addition, crew time will be scheduled in the order projects and materials are received.

THANK YOU

Thank you for awarding me the Renville-Sibley Power Cooperative Scholarship. I will be attending Bethany Lutheran College to major in Physical Education this fall. Thank you again for your generosity.

- Ryan Schrupp

FREE Want Ad Service

Members can submit ads for the following categories: Giveaway, For Sale, For Rent, and Wanted. Ads should be or are limited to no more than 15 words and must be received by the first of the month to be included in the following month's newsletter. Renville-Sibley reserves the right to edit content or exclude ads due to space restrictions. Ads will be run one time only unless resubmitted. Please complete the following information and mail it to the Renville-Sibley Cooperative Power, PO Box 68, Danube, MN 56230.

Name: _____

Address: _____

Phone number: _____

Ad to be placed (limit of 15 words per ad)

Type of ad: ☐ Giveaway ☐ For Sale ☐ For Rent ☐ Wanted

Operation Round Up

The Renville-Sibley Cooperative Power Association Board of Trustees met on Tuesday, July 15th to review Operation Roundup grant applications. The board reviewed the applicants and awarded six (6) grants of \$500 each to non-profit and community organizations. The following grants were awarded to:

BOLD Wrestling Club

Their organization Provides funds to purchase approximately 110 new youth singlets for the youth wrestling program as they see an increase in program participation.

Flamboyant Flamingo Flock Foundation

Raises funds by hosting fun community events to give back to breast cancer survivors that need financial assistance in the southern MN area.

Our Savior's Lutheran Church

Funding helps provide boxed lunches for local community members of all ages from the many surrounding towns during the months of June and July.

Renville County Food Shelf

Funding will help cover the costs of repairs needed after the building experienced water damage. This will eliminate hazards for the food shelf volunteers and community members who utilize the food shelf. This will allow their doors to remain open to help the community members in need.

Sacred Heart SHIRT Team-MRU

Funding will help cover the cost of new vital machine equipment used in their Mobile Response Unit rig. MRU is a volunteer medical response service that supports the City of Sacred Heart, and they are the first responders when there is an ambulance request made.

SWWC Foundation for Innovation in Education

Funds will support the 2025-26 SWWC Student Enrichment Program including activities and programs for students and families. Last year, over 800 students in the RSCPA service territory participated in one or more events.

All funds for Operation Round Up are placed in a trust fund separate from the cooperative accounts. The next application deadline is October 1, 2025. If your non-profit organization has a project or event that would benefit the community, Operation Round Up funds may be available to help your group reach its goal. The next meeting of the Board of Trustees will be held on October 15, 2025.

Applications for donations can be found at rscpa.coop/operation-round. Contact the office at 320-826-2593 for more information.

Notice:

The August board meeting will be held on Tuesday, August 26th, 2025 at 8 a.m.

The September board meeting will be held on Thursday, September 18th, 2025 at 8 a.m.

Mission Statement

Renville-Sibley Cooperative Power Association will provide safe, efficient, reliable electric energy and services to enhance the quality of rural living.

Nondiscrimination Statement

In accordance with Federal civil rights law and U.S. Department of Agriculture (USDA) civil rights regulations and policies, the USDA, its Agencies, offices, and employees, and institutions participating in or administering USDA programs are prohibited from discriminating based on race, color, national origin, religion, sex, gender identity (including gender expression), sexual orientation, disability, age, marital status, family/parental status, income derived from a public assistance program, political beliefs, or reprisal or retaliation for prior civil rights activity, in any program or activity conducted or funded by USDA (not all bases apply to all programs). Remedies and complaint filing deadlines vary by program or incident. Persons with disabilities who require alternative means of communication for program information (e.g., Braille, large print, audiotape, American Sign Language, etc.) should contact the responsible Agency or USDA's TARGET Center at (202) 720-2600 (voice and TTY) or contact USDA through the Federal Relay Service at (800) 877-8339. Additionally, program information may be made available in languages other than English.

To file a program discrimination complaint, complete the USDA Program Discrimination Complaint Form, AD-3027, found online at http://www.ascr.usda.gov/complaint_filing_cust.html and at any USDA office or write a letter addressed to USDA and provide in the letter all of the information requested in the form. To request a copy of the complaint form, call (866) 632-9992. Submit your completed form or letter to USDA by: (1) mail: U.S. Department of Agriculture Office of the Assistant Secretary for Civil Rights, 1400 Independence Avenue, SW Washington, D.C. 20250-9410; (2) fax: (202) 690-7442; or (3) email: program.intake@usda.gov. This institution is an equal opportunity provider.

REGISTER TO WIN!

Bring this coupon and mailing label to the Touchstone Energy® Cooperatives booth at Dakotafest or the South Dakota State Fair to win a prize!

Your Phone Number: _____

Your E-mail Address: _____



To have your event listed on this page, send complete information, including date, event, place and contact to your local electric cooperative. Include your name, address and daytime telephone number. Information must be submitted at least eight weeks prior to your event. Please call ahead to confirm date, time and location of event.

UNTIL OCT. 31

Wallace Dow, Prairie Architect Traveling Exhibit
Lake County Museum
Madison, SD
605-256-5308

SEPT. 2, OCT. 4

Davis Indoor/Outdoor Flea Market & Vendor Fair
9 a.m.-3 p.m.
Davis American Legion
Davis, SD
605-351-3074

SEPT. 5-7

James Valley Threshing Show & Tractor Club
Threshermen's Park
Andover, SD
www.jamesvalleythreshers.com

SEPT. 7

Farmer Tractor Parade
1 p.m.
Tractors, Cars & Food
Farmer, SD

SEPT. 7

Homesteader Day Celebration
Pioneer Demonstrations
1-4 p.m.
Beaver Creek Nature Area
Valley Springs, SD

SEPT. 13-14

Harvest & Kuchen Festival
Delmont, SD
www.twinriversoldiron.org

SEPT. 13-14

South Dakota Senior Softball Tournament
Huron, SD
605-295-2039
www.southdakotaseniorgames.org

SEPT. 19

Veterans Stand Down
SD Military Alliance
8:30-11:30 a.m.
1600 W. Russell St.
Sioux Falls, SD

SEPT. 19-20

Holiday Arts Fall Craft Show
Davison Cty Fairgrounds
Mitchell, SD
605-770-8136

SEPT. 19-20

SiouxperCon Annual Convention
Benefits Make-A-Wish, REACH Literacy, JY6 Foundation
Sioux Falls Convention Center
Sioux Falls, SD

SEPT. 26-28

Coal Springs Threshing Bee Featuring Horse-Drawn Equipment
Meadow, SD
605-788-2229

SEPT. 27

Your Race, Your Pace
9:30 a.m.
Wylie Park
Aberdeen, SD

SEPT. 27

Wheelin' To Wall Cycling Event
Wall, SD
www.wheelintowall.com

SEPT. 27

Ag Day
Roundup Arena
Belle Fourche, SD

OCT. 3

DSU Architecture Walking Tour
3-4 p.m.
Lake County Museum
Madison, SD

OCT. 4

Pumpkin Train, Vendor Showcase
Prairie Village
Madison, SD

Note: We publish contact information as provided. If no phone number is given, none will be listed. Please call ahead to verify the event is still being held.