

# COOPERATIVE CONNECTIONS

## Mammoth Discovery

Coal Miner Finds  
Mammoth Tusk

Pages 8-9

**A Golden Harvest**

Pages 12-13



# Connect with Minnesota's Electric Cooperatives at Farmfest



**Roger Manthei**  
Board Chair

Join Minnesota's rural electric cooperatives at Farmfest from August 6-8! As Minnesota's premier agricultural event, Farmfest attracts nearly 30,000 attendees and hosts over 500 exhibits and vendors in rural Redwood County each year. 940800

Farmfest serves as a vital platform for addressing political and educational issues impacting farmers and rural communities across Minnesota. From policy discussions to showcasing the latest technological advancements in agriculture, the event offers valuable insights and networking opportunities for all attendees.

Minnesota electric cooperatives have a long history of participating in Farmfest and connecting with our agricultural partners. Be sure to visit our booths where we will be showcasing tools

and technology to make outdoor work easier and demonstrating our commitment to safety with an interactive electrical safety exhibit. Learn firsthand about essential safety measures to keep you and your family safe. See a live safety demonstration illustrating the need for caution when working near or moving large equipment around powerlines. Don't miss this opportunity to connect with Minnesota's electric cooperatives and discover how we're empowering farmers and rural communities across the state.

Minnesota's electric cooperatives are proud to supply the electrical needs of most farms across the state, serving members in every Minnesota county.

See you at Farmfest!

## TIPS TO BEAT THE SUMMER PEAK

When we all work together to lower energy use during peak hours, we can lock in lower electricity rates, so everyone saves. Here are a few simple ways to save during peak summer hours.

- 1** Raise the thermostat a few degrees.
- 2** Use ceiling fans (in occupied rooms) to feel cooler.
- 3** Avoid using major appliances.
- 4** Close drapes and blinds to block heat from the sun.
- 5** Turn off and unplug non-essential electronics and lights.



## Notice

STAR Energy Services will be starting pole testing on Renville-Sibley's system beginning the week of August 15th. STAR Energy Services conducts our below-ground pole testing. We are in the sixth year of a 10-year pole inspection plan, with the rejection rate holding at around a 3% average. Our goal is to test approximately 1,700 poles in 2024, primarily using a ranger or other 4-wheeled off-road vehicles. The inspector will be in Flora, Beaver Falls, and Henryville townships this year. Please call the office if you have any questions during this process.

# June Board Meeting Highlights

The June board meeting was held on Tuesday, June 25 at 8 a.m. All board members were present with the exception of Jeff Boersma. Others present were CEO DeeAnne Norris, Attorney Jeff Whitmore, Gene Alex, and Amy Ervin.

The board reviewed and approved the following items:

- Minutes of the May 30 board meeting
- Operating and disbursement reports for the month of May
- Capital Credits to Estates
- Safety Report for June
- RESCO Voting Delegate and Alternate Voting Delegate
- NRECA Regional Voting Delegate and Alternate Voting Delegate
- Federated Rural Electric Voting Delegate and Alternate Voting Delegate
- CFC District Meeting Voting Delegate and Alternate Voting Delegate
- Basin Electric Voting Delegate and Alternate Voting Delegate

The board reviewed:

- Total new members
- Capital Credits Transferred
- Reports from staff members as to the activities in their department. Items in the reports include:
  - o High-level Statement of Operations review – YTD through May (unaudited)
  - o Organization activities
  - o East River update
  - o Basin Electric update
  - o NRECA update
  - o MREA update
  - o Linecrew work in progress, equipment update, and outage update
  - o Accounts Receivable
- Annual Meeting

Please contact the Renville-Sibley office if you would like more information regarding the board meeting.

## COOPERATIVE CONNECTIONS

### RENVILLE-SIBLEY CO-OP POWER

(USPS 019-074)

#### Board of Directors

Roger Manthei – Chair  
 Whitey Hinderman – Vice Chair  
 Wayland Zaske – Secretary/Treasurer  
 Jeff Boersma  
 Gary Eekhoff  
 Vicky Firl  
 Alan Neyers  
 Gary Peterson  
 Helen Ruebel

#### Renville-Sibley Employees

Gene Alex – Line Superintendent  
 Brian Athmann – Journeyman Lineman  
 Shawn Beckler – Crew Chief  
 Mike Benson – Journeyman Lineman  
 Brad Braulick – Crew Chief  
 Nick Bruns – Technology Manager  
 Anthony Carruth – Journeyman Lineman  
 Amy Ervin – Member and Board Services Representative  
 Brayden Fischer – Journeyman Lineman  
 DeeAnne Norris – CEO  
 Clint Olson – Journeyman Lineman  
 Kathy Ridl – Accounting Clerk  
 Marc Snyder – Business Finance & Accounting  
 Jill Woods – Member Services Professional

RENVILLE-SIBLEY COOPERATIVE CONNECTIONS is published monthly by Renville-Sibley Co-op Power Association, 515 Highway 212 W, Danube, MN, 56230 for its members. Electric cooperative members devote 75 cents from their monthly electric payments for a subscription. Periodicals Postage Paid at Danube Post Office, Danube, MN 56230 and at additional mailing offices. POSTMASTER: Send address changes to: Renville-Sibley Cooperative Connections, PO Box 68, Danube, MN 56230; Telephone (320) 826-2593; Toll Free 1-800-826-2593; Fax (320) 826-2679.

**Web site:** [www.rscpa.coop](http://www.rscpa.coop)

This institution is an equal opportunity provider and employer.

# Extreme Heat Preparation

### Learn How to Stay Hydrated

You need to drink enough water to prevent heat illness. An average person needs to drink about 3/4 of a gallon of water daily. Everyone's needs may vary.

- You can check that you are getting enough water by noting your urine color. Dark yellow may indicate you are not drinking enough.
- Avoid sugary, caffeinated and alcoholic drinks.
- If you are sweating a lot, combine water with snacks or a sports drink to replace the salt and minerals you lose in sweat.
- Talk to your doctor about how to prepare if you have a medical condition or are taking medicines.

### Make a Plan to Stay Cool

Do not rely only on electric fans during extreme heat. When temperatures are in the high 90s, fans may not prevent heat-related illness. Taking a cool shower or bath or moving to an air-conditioned place is a much better way to cool off.

- Spending a few hours each day in air conditioning can help prevent heat illness.
  - If you have air conditioning, be sure that it is in working order.
  - If you do not have air conditioning or if there is a power outage, find locations where you can stay cool. For example, a public library, shopping mall or a public cooling center. Plan how you will get there.
  - Additional resources may be available from local government or community groups.
- Make sure you have plenty of lightweight, loose clothing to wear.
- Create a support team of people you may assist and who can assist you. Check in with them often to make sure that everyone is safe.

### Learn Emergency Skills

- Learn how to recognize and respond to heat illness.
- Learn First Aid and CPR.
- Be ready to live without power. Utilities may be offline. Be ready to live without power, gas and water. Plan for your electrical needs, including cell phones and medical equipment. Talk to your doctor. Plan for backup power.

### Gather Emergency Supplies

- Gather food, water and medicine. Stores might be closed. Organize supplies into a Go-Kit and a Stay-at-Home

Kit. In the event of a power outage, you may lose access to clean drinking water. Set aside at least one gallon of drinking water per person per day. Consider adding drinks with electrolytes. Include sunscreen and wide-brimmed hats.

- Go-Kit: at least three days of supplies that you can carry with you. Include backup batteries and chargers for your devices (cell phone, CPAP, wheelchair, etc.)
- Stay-at-Home Kit: at least two weeks of supplies.
- Have a one-month supply of medication in a child-proof container and medical supplies or equipment.
- Keep personal, financial and medical records safe and easy to access (hard copies or securely backed up)
- Consider keeping a list of your medications and dosages on a small card to carry with you.

*Source: American Red Cross*



### Power Line Safety "Call 911 and Don't Get Out"

#### Hobie Klein, Age 12

Hobie Klein warns farmers to call 911 and don't get out of the tractor if contact is made with a power line. Hobie's parents are Dean and Karey Klein, members of Sioux Valley Energy.

Kids, send your drawing with an electrical safety tip to your local electric cooperative (address found on Page 3). If your poster is published, you'll receive a prize. All entries must include your name, age, mailing address and the names of your parents. Colored drawings are encouraged.

# Summer SALADS

## MOM'S VEGETABLE SALAD

### Ingredients:

#### Salad

2 cans diced carrots  
1 can green beans  
1 can yellow beans  
1 small can peas  
1 can cut baby corn

*Drain all the vegetables*

#### Add

1/2 cup diced green pepper  
1 cup diced celery  
1 diced medium onion

#### Dressing

Combine in a saucepan  
1/2 cup oil  
1 1/3 cup sugar  
1/3 cup white vinegar  
1/3 cup cider vinegar  
2 Tbsp water

*Combine in a saucepan and boil until clear*

### Method

Pour dressing over vegetables and refrigerate for several hours before serving. Keeps for a week.

**Debra Clow**  
Harrisburg, S.D.

## FRESH SUMMER SALAD

### Ingredients:

3 tbsps. olive oil, divided  
1 tbsp. lime juice  
1/4 tsp. salt  
1 1/5 cups fresh corn or thawed frozen corn  
1 1/2 cups cherry tomatoes, halved  
1/2 cup cucumber, finely chopped  
2 tbsp. fresh basil, minced  
1/3 cup crumbled Feta cheese or Parmesan cheese  
1 tbsp. balsamic vinegar or Italian salad dressing

### Method

Mix 2 tablespoons of oil, lime juice and salt in a small bowl. Cook corn in a skillet with remaining 1 tbsp. oil. Pour corn into bowl, cool slightly. Add tomatoes, cucumber and basil. Refrigerate. Before serving, drizzle with dressing, cheese and balsamic vinegar or Italian dressing.

**Barb Selland**  
Mitchell, S.D.

## CHICKEN SALAD

### Ingredients:

1/2 cup plain lowfat yogurt  
2 tbsps. mayonnaise  
1 tsp. parsley flakes  
1/2 tsp. seasoned salt  
1/4 tsp. ground black pepper  
1/2 rotisserie chicken, cut into bite-size chunks (about 2 cups)  
1/2 cup thinly sliced celery  
1/4 cup chopped red onion

### Method

Mix yogurt, mayonnaise, parsley, seasoned salt and pepper in large bowl. Add chicken, celery and onion; toss to coat well. Cover. Refrigerate at least 30 minutes or until ready to serve. Serve in sandwiches or on salad greens.

[McCormick.com](http://McCormick.com)

Please send your favorite recipes to your local electric cooperative (address found on Page 3). Each recipe printed will be entered into a drawing for a prize in December 2024. All entries must include your name, mailing address, phone number and cooperative name.

# For Safety's Sake, Do Not Mess with a Meter

For your safety, never try to tamper with or pull (remove) a meter. Only electric utility crews should access an electric meter.

Illegally accessing a meter can cause an arc flash bright enough to result in blindness and powerful enough to launch fragments of red-hot, shrapnel-like debris, according to the Cooperative Research Network. Serious injury or death from electrocution, explosion or fire is often a result of meter tampering.

Individuals may tamper with a meter to bypass it, create an illegal connection to a power line, electrify fences or attempt to reconnect or disconnect the power, often with disastrous consequences.

### More on meter safety

- Tampering with a meter is illegal in most states.
- Meters should only be installed, maintained or removed by electric utility crews.
- Accessing the backside of a meter can generate high voltage; pulling or tampering with a meter can cause electric shock, sparks, surges, explosions or fire.
- Electricity should always be connected or disconnected using a transfer switch or a dedicated disconnection point.
- There is no guarantee that a structure is deenergized by pulling a meter.
- If firefighters respond to a call and know they will need a disconnect, they should call the electric utility en route.
- If firefighters try disconnecting a home by pulling a meter, it can introduce additional problems and damage.

### Other facts

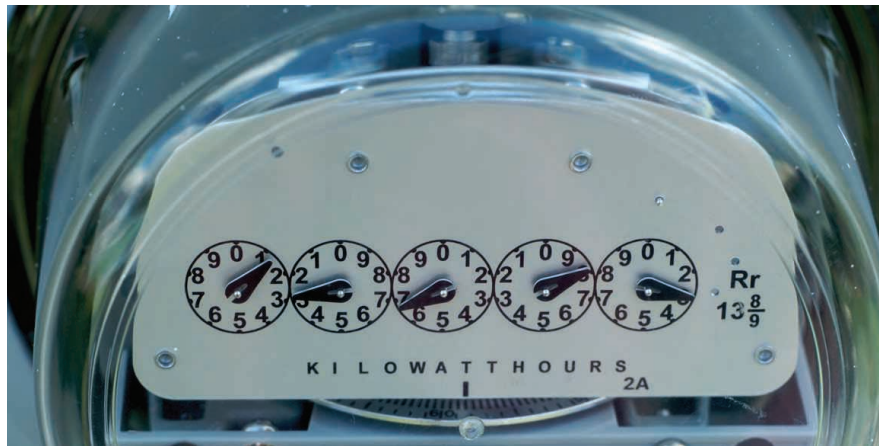
If a home's electricity is shut off at a main disconnect, the house can be automatically reconnected if there is a standby generator or battery-stored power.

Only the electric utility can properly

and safely disconnect a meter. Utility crews are trained in proper disconnection techniques and wear protective clothing and gear.

For more information about electrical safety, visit [SafeElectricity.org](https://SafeElectricity.org).

## METER TAMPERING IS NOT WORTH IT



For your safety, never try to tamper with or pull (remove) a meter.

Illegally accessing a meter can result in an arc flash bright enough to cause blindness and powerful enough to launch fragments of red-hot, shrapnel-like debris, according to the Cooperative Research Network.

Only electric utility crews can properly and safely disconnect a meter. They are trained in safe and proper disconnection techniques and wear protective clothing and gear.



### A FEW METER FACTS

- Tampering with a meter is illegal in most states.
- Meters should only be installed, maintained or removed by electric utility crews.
- Accessing the backside of a meter could generate high voltage.
- Serious injury or death from electrocution, explosion or fire is often a result of meter tampering.
- Electricity should always be connected or disconnected using a transfer switch or dedicated disconnection point.
- There is no guarantee that a structure will be deenergized by pulling a meter.

For more information about electrical safety, visit [SafeElectricity.org](https://SafeElectricity.org).



## Stray Voltage

Stray voltage can cause serious problems in certain confinement livestock systems. Dairywomen and hog producers can lose production from their livestock and experience health problems due to small electric voltages. These voltages are known by several names, including tingle voltage, neutral-to-earth voltage, neutral-to-ground voltage and nuisance voltage. They all refer to very low voltage between two animal contact points. The cause of the voltage can be varied and complex. It may be caused by poor load balance, faulty wiring or equipment, improper grounding or a host of other electrical problems.

One common problem is that the farm operations grow in size, but the electrical service isn't upgraded to grow along with it. Also, electrical systems become obsolete and deteriorate due to improper maintenance.

It must be understood, however, that many factors other than stray voltage may cause behavior, health and production problems. A careful analysis of all possible causes is necessary if proper corrective procedures are to be found.

A special section of the National Electric Code deals with the special requirements for wiring all livestock buildings. If these are strictly followed and buildings are "up to code," the potential for stray voltage problems is greatly reduced. Many older barns have been converted from one use to another and do not meet code requirements. If you are building new livestock facilities, be sure all work is done in accordance with Article 547 of the National Electric Code.

If stray voltage is suspected on your farm, contact Renville-Sibley Cooperative Power Association. An investigation will

be made to determine if a problem is present. Your electrician is also requested to be present so any problems can be noted and corrected. In dairy operations, consulting your milking equipment dealer and local veterinarian is also recommended. They can determine if equipment problems or health problems that may or may not be related to stray voltage are present.

### ENERGY EFFICIENCY TIP OF THE MONTH

Placing heat sources, such as lamps, computers or TVs, near your thermostat can result in false temperature readings, increased energy use and inconsistent cooling/heating. Make sure your thermostat is installed in an area clear of obstructions, electronic devices, direct sunlight and drafts.

Ensuring your thermostat is free from these types of interferences optimizes energy efficiency, improves indoor comfort and reduces wear and tear on your cooling/heating system.

Source: [energy.gov](http://energy.gov)



*Photo Credit: North Dakota Geological Survey*

# Mammoth Discovery

**Shannon Marvel**

shannon.marvel@sdrea.coop

Over Memorial Day of 2023, a coal miner made a historic discovery at the Freedom Mine in North Dakota.

“The shovel operator just happened to take a scoop that had a complete mammoth tusk,” said Jeff Person, a paleontologist with the North Dakota Geological Survey.

“The tusk was about seven-foot-long. That shovel must’ve picked it up just perfectly to not damage or break it. The driver reported the find to his superiors at the Freedom Mine, who then contacted us,” Person said.

The tusk was found in an old streambed. Other fossils



*Photo Credit: North Dakota Geological Survey*



were found in the streambed, including “more than twenty bones from the skeleton, including ribs, a shoulder blade a tooth and parts of the hips,” according to a news release.

“Most of the mammoth fossils known from North Dakota are isolated bones and teeth,” stated Clint Boyd, Senior Paleontologist for the North Dakota Geological Survey, in the news release. “This specimen is one of the most complete mammoth skeletons discovered in North Dakota, making it an exciting and scientifically important discovery.”

The bones were sent off to the Paleontology Lab at the North Dakota Heritage Center and State Museum in Bismarck to undergo extensive cleaning before being prepped to be dried out, which requires that the bones be

wrapped in plastic.

It could take up to another year for the bones to be dried out enough to be taken out of the plastic wrap, Person said.

At that point, the bones will be the focus of scientific research, he said.

According to the news release, “mammoths lived in North Dakota during the Pleistocene Epoch, commonly called the Ice Age, and went extinct in this area around 10,000 years ago. Several species of mammoth lived in North America, including the Woolly Mammoth and the Columbian Mammoth. They lived alongside other iconic animals like saber-toothed tigers and giant sloths. Once the bones are fully cleaned, paleontologists will be able to identify which species was collected from the mine.”



*Photo Credit: North Dakota Geological Survey*

# Scholar of the Year Banquet 2024

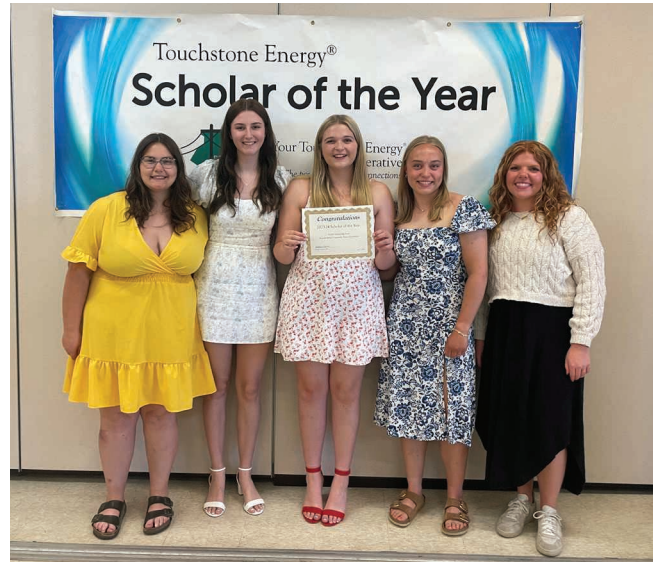


**Amy Ervin**  
Member and Board Services Representative

On Wednesday evening, June 5th, five recent high school graduates, their family members, and four of the teachers that nominated them came together at the Danube Community Center for the Renville-Sibley Co-op Power Touchstone Energy® Scholar of the Year Banquet.

As a Touchstone Energy Cooperative, Renville-Sibley was founded on the four pillars of Integrity, Accountability, Innovation, and Commitment to

Community. Based on these principles, Renville-Sibley Co-op Power sponsors the Scholar of the Month program to recognize those high school students who also share these same values. During the school year, in the months of September through April, these students were nominated by a teacher at one of our area schools because they felt the student demonstrated outstanding academic, school, and community achievements. Through a random drawing, one name is selected each month from those names submitted. A \$100



The following scholars attended the Scholar of the Year Banquet held on June 5th. From left to right: Sophie Geer (RCW), Coraley Bryan (RCW), Mazzarine Self (RCW), Emily Lippert (RCW), and Avery Duinick (CMCS).



Mazzarine Self, winner of a \$1,000 scholarship is pictured with Renville-Sibley's Member and Board Services Representative, Amy Ervin.

donation was given to the school of the selected student with the student determining how the funds were to be distributed at their school (music, sports, art, etc.). The Scholar of the Month was then featured in the Cooperative Connections monthly newsletter, in their local newspaper, and on the local radio stations. Schools invited to participate in the program include Renville County West, MACCRAY, BOLD, Redwood Valley, Central Minnesota Christian School, Cedar Mountain, and GFW.

Renville-Sibley hosted the Scholar of the Year Banquet to recognize each of these students. Mazzarine Self was selected, by a random drawing, as the Scholar of the Year and the winner of a \$1,000 scholarship. Mazzarine is a recent high school graduate of RCW High School. To be eligible for the scholarship, the student had to be present at the banquet.

Tim Seehusen, a Renville County native and local business owner was our guest speaker for the evening. Tim spoke about the life changes these high school graduates were about to experience and the challenges that may come along the way. He encouraged them to chase their goals and even if they fail,

they will likely have learned something along the way. Main Street Café in Danube once again catered a delicious meal that was enjoyed by everyone.

Renville-Sibley looks forward to another great year of offering the Touchstone Energy Scholar of the Month program in the 2024– 2025 school year.

The following is a list of the scholars selected each month and the school organization they chose for their \$100 donation:



Guest Speaker, Tim Seehusen speaking at the Scholar of the Year Banquet.

Month	Scholar	School Organization
September	Ellysn Livingston	Senior Class Account
October	Brannndon Pendleton	Athletic Department
November	Caitlynn Roiseland	Sports
December	Sophie Geer	Business Department
January	Emily Lippert	Science Department
February	Coraley Bryan	Science Department
March	Mazzarine Self	Special Ed Department & English Department
April	Avery Duininck	Volleyball Program

## FOR SALE:

Grass fed, grass finished beef. Burger-Individual Cuts-Quarters-Halves when available. Call for pricing.

Dave Pastoors  
Olivia, MN 56277  
320-522-4851

Used Taylor woodfired outdoor waterstove. Model T45054. Min 12 hour burn. \$1,500.00.

Darlene Konz  
Olivia, MN 56277  
320-523-2612

H & H Pallet Forks 1 3/8" x 4" x 48". Class 2 Like new – used 3 times.

Daryl Wendt  
Gibbon, MN 55335  
507-327-8101

## OUTAGE REPORT:

Affecting 10 members or more

None

Please contact Renville-Sibley's office for more details about these power outages.

## OPERATION ROUND UP

If your non-profit organization has a project or event that would benefit the community, Operation Round Up funds may be available to help your group reach its goal. Contact the office at 320-826-2593 for more information or fill out an application for donations today at [rscpa.coop/operation-round](http://rscpa.coop/operation-round).





# A GOLDEN HARVEST

## The Buzz Behind Adee Honey Farms

**Frank Turner**

[frank.turner@sdrea.coop](mailto:frank.turner@sdrea.coop)

Three generations ago, the Adee family learned that a tumultuous time can lead to significant opportunity. During the 1930s, the Great Depression wreaked havoc on small rural communities and the agricultural industry. The value of crops and livestock plummeted, and the land became arid.

These hard times impacted many in the Midwest, including Vernon Adee, a rural teacher and rancher in Nebraska. Vernon needed a new way to provide for his family, and a letter from his brother held the answer: “I can’t sell chickens or hogs, but I’m doing well with honey. Be advised: Get a beehive.”

Following his brother’s advice, Vernon attended a foreclosure auction and purchased his first beehive. The decision to begin

beekeeping would inspire several more generations of the Adee family to continue in the trade.

Wanting to start their own operation, Vernon’s sons, Richard and Stanley, purchased a retiring beekeeper’s business through a trade magazine advertisement in 1957. Located in Bruce, South Dakota, the business included 1,500 hives and a breeding yard in Woodville, Mississippi. The acquisition marked the beginning of Adee Honey Farms, and what began as a small family farm quickly grew into the largest beekeeping operation in the country. Today, Adee Honey Farms supports more than 80,000 colonies and nearly 70 full-time employees.

“It started with survival and eventually became a family business,” said Bret Adee, Vernon’s grandson and the owner-operator of Adee Honey Farms. “I can remember being four or five years old and being in the field with my dad, holding the smoker and helping where I could. By the time I was in elementary school, I was loading trucks and moving boxes in the warehouse. Like anyone who grew up on a farm, I was involved in the family business by the time I could walk.”

From a young age, Bret has held a deep love and appreciation for the honey bee. The insect’s ability to cooperate and produce golden treasure while benefiting plants, crops, and the ecosystem at large makes them a unique livestock, unlike any other.

“To watch a hive grow and forage, and by the end of the summer make up to 150 pounds of honey – it’s just so exciting,”

said Bret. “It’s the dynamics of the biology that keeps it interesting.”

Right now, Adee Honey Farms is engaged in honey production in the Midwest, with their bees spread across South Dakota and the west edge of Minnesota and the south edge of North Dakota. Around the first week of August, Bret’s business will start the honey harvest, an event that can last until the first frost or even longer. For now, Bret said this year is shaping up to be a good season for honey production.

“It’s early, but I’m optimistic. The years when there is a lot of clover are the years that beekeepers do well,” said Bret. “We had a wet enough fall that enough clover germinated. We can always lose that to a hot dry wind... but we are optimistic right now.”

But bees aren’t just used to make honey; they also have hand in pollinating crops across the country. More than a neat fact, it’s also the second half of the beekeeping industry. The mere presence of honey bees can increase yields for crops such as alfalfa and sunflowers by up to 20 to 30 percent, depending on the variety of crop. According to the U.S. Department of Agriculture, pollination is responsible for more than \$18 billion in added revenue to crop production in the country.

Once the honey harvest is over, the bees will be loaded onto a truck to tour the country, traveling from the Dakotas to California and later to Texas in search of favorable weather and crops to pollinate. In fact, crop yields from California almond trees and apple trees are almost totally dependent on pollination from bees, enticing farmers from across the country to welcome

bees onto their land. Everyone benefits – even bees.

“It’s a win for the consumer who gets to eat the honey. It’s a win for the landowner who has the bees on his land, and if everything goes right, it’s good for the beekeeper’s family too,” said Bret.



Bret Adee, owner-operator of Adee Honey Farms, is a third-generation beekeeper in the Adee family. Photos courtesy of Adee Honey Farms.



## Reminder:

Join us at 6:00 pm on July 23rd for Renville-Sibley's Annual meeting at the new facility (515 US HWY 212 W) in Danube. Early Bird drawings at 5:45. A meal will be served following the business portion of the meeting.

## Notice:

The July board meeting will be held on Tuesday, July 23 at 2 p.m.

The August board meeting will be held on Tuesday, August 27 at 8 a.m.

## Comparative Report

	Current YTD	One Year Ago YTD	10 Years Ago YTD
Average # of Consumers	1,880	1,879	1,914
kWhs purchased	11,506,551	7,908,162	7,721,364
Cost of purchased power	\$702,102.21	\$389,546.00	\$410,544.30

## FREE Want Ad Service

Members can submit ads for the following categories: Giveaway, For Sale, For Rent, and Wanted. Ads should be or are limited to no more than 15 words and must be received by the first of the month to be included in the following month's newsletter. Renville-Sibley reserves the right to edit content or exclude ads due to space restrictions. Ads will be run one time only unless resubmitted. Please complete the following information and mail it to the Renville-Sibley Cooperative Power, PO Box 68, Danube, MN 56230.

Name: \_\_\_\_\_

Address: \_\_\_\_\_

Phone number: \_\_\_\_\_

Ad to be placed (limit of 15 words per ad)

\_\_\_\_\_

\_\_\_\_\_

Type of ad:  Giveaway  For Sale  For Rent  Wanted

## WHERE'S THE NUMBER?

Last month RSCPA member did not find their member number in the newsletter. The value of the energy credit will be increased to \$135. Another number has been hidden in this newsletter. If you find your number and call the office by the 1st of August, you will receive this credit on your electric statement. Good luck in your search!

## REMINDER

Renville-Sibley encourages any member planning on making changes to their service in 2024 or 2025 to please contact the office as soon as possible. In order to complete these projects on time, material may need to be ordered well in advance as often there is extended lead time to get the appropriate material. In addition, crew time will be scheduled in the order projects and materials are received.

## THANK YOU

I am writing to express my deepest gratitude for being selected as the recipient of the Renville-Sibley Scholarship. I am deeply honored and sincerely appreciate your recognition of my efforts in pursuing my academic goals. Thank you again for the significant financial support. – Briana Roche

Thank you for your choice to help sponsor my college education! My career goal of becoming a Large Animal Vet would not be possible without you! As I head to NDSU next year, I will be starting my undergraduate work by majoring in animal science/pre-vet. Thank you for helping make my dreams a reality! – Lauren Dolezal

*ff*

**Visit Renville Sibley Co-op Power, along with other Touchstone Energy Cooperatives, at Farmfest 2024 and enter for a chance to win a grand prize!**

**FARMFEST 2024 • AUGUST 6 - 8 • REDWOOD FALLS, MN**

*Bring this coupon to Booth #2301.*

NAME: \_\_\_\_\_

ADDRESS: \_\_\_\_\_

PHONE: \_\_\_\_\_

EMAIL ADDRESS: \_\_\_\_\_

*You must be a member of one of the participating electric cooperatives to win.*



## Mission Statement

Renville-Sibley Cooperative Power Association will provide efficient, reliable electric energy and services to enhance the quality of rural living.

## Nondiscrimination Statement

In accordance with Federal civil rights law and U.S. Department of Agriculture (USDA) civil rights regulations and policies, the USDA, its Agencies, offices, and employees, and institutions participating in or administering USDA programs are prohibited from discriminating based on race, color, national origin, religion, sex, gender identity (including gender expression), sexual orientation, disability, age, marital status, family/parental status, income derived from a public assistance program, political beliefs, or reprisal or retaliation for prior civil rights activity, in any program or activity conducted or funded by USDA (not all bases apply to all programs). Remedies and complaint filing deadlines vary by program or incident. Persons with disabilities who require alternative means of communication for program information (e.g., Braille, large print, audiotape, American Sign Language, etc.) should contact the responsible Agency or USDA's TARGET Center at (202) 720-2600 (voice and TTY) or contact USDA through the Federal Relay Service at (800) 877-8339. Additionally, program information may be made available in languages other than English.

To file a program discrimination complaint, complete the USDA Program Discrimination Complaint Form, AD-3027, found online at [http://www.ascr.usda.gov/complaint\\_filing\\_cust.html](http://www.ascr.usda.gov/complaint_filing_cust.html) and at any USDA office or write a letter addressed to USDA and provide in the letter all of the information requested in the form. To request a copy of the complaint form, call (866) 632-9992. Submit your completed form or letter to USDA by: (1) mail: U.S. Department of Agriculture Office of the Assistant Secretary for Civil Rights, 1400 Independence Avenue, SW Washington, D.C. 20250-9410; (2) fax: (202) 690-7442; or (3) email: [program.intake@usda.gov](mailto:program.intake@usda.gov). This institution is an equal opportunity provider.

# August Member Events



**Amy Ervin**  
Member and Board Services Representative

Before you know it, August will be here, and that brings with it the annual Farmfest and Family-a-Fair night events for Renville-Sibley. Be sure to mark your calendar so you don't miss these two great events.

### Farmfest

The annual Farmfest event will be held on August 6 – 8 at the Gilfillan Estate near Morgan, Minnesota. Renville-Sibley, along with other electric cooperatives in the region, have joined together to sponsor a booth at this event. Be sure to visit us at Booth #2301 in the large ag tent for more information. Farmfest is a great outdoor event for farmers

and anyone interested in agriculture.

When you come, remember to bring the above coupon with you. This coupon will be used to register you for the prize drawing for a chance to win an EGO 9 gallon wet/dry vacuum, pole saw, backpack leaf blower, 39 inch ice auger, and or a 16 inch chainsaw. You must bring the coupon with you to be entered into the drawing. Stop by to see what you might win!

### Family-a-Fair Night

Renville-Sibley is excited to continue our Family-a-Fair night tradition of inviting our members to attend the Renville County Fair compliments of the Cooperative. This great event brings families and neighbors together to enjoy all the fun fair activities.

Cooperative members (up to four family members) are invited to attend the Renville County Fair FREE on THURSDAY, AUGUST 8th. Members will receive a postcard in the mail the week of July 22nd. This postcard entitles up to four family members FREE entrance into the fair. Postcards should be brought to the West entrance gate of the Renville County Fair from 3 –7 p.m. Renville-Sibley representatives will be located just outside the west fence to assist you. The postcard will be used to enter members into a drawing for an energy gift certificate at the value of \$50. Children will have the opportunity to submit their names for a prize drawing as well.

If you have any questions about these two great events, be sure to give us a call at 320-826-2593 or 800-826-2593.



## REGISTER TO WIN!

Bring this coupon and mailing label to the Touchstone Energy® Cooperatives booth at Dakotafest or the South Dakota State Fair to win a prize!

Your Phone Number: \_\_\_\_\_

Your E-mail Address: \_\_\_\_\_



**AUG. 2-11**  
**Sturgis Motorcycle Rally**  
Sturgis, SD  
[www.sturgismotorcyclerrally.com](http://www.sturgismotorcyclerrally.com)

**AUG. 10-11**  
**Fur Trader Days**  
Geddes, SD  
605-680-2160

**AUG. 20-22**  
**Dakotafest**  
Mitchell, SD

**AUG. 22**  
**61st Annual Steam Threshing Jamboree**  
Prairie Village  
Madison, SD

**AUG. 28 - SEPT. 2**  
**South Dakota State Fair**  
7 a.m. - 8 p.m.  
State Fairgrounds  
Huron, SD  
[www.SDStateFair.com](http://www.SDStateFair.com)

**SEPT. 8**  
**Homesteader Day**  
1-4 p.m.  
Beaver Creek Nature Area  
Valley Springs, SD

**SEPT. 14-15**  
**2024 Kuchen & Harvest Festival**  
Delmont, SD

**SEPT. 17**  
**EV Expo**  
W.H. Lyon Fairgrounds  
Sioux Falls, SD

**OCT. 17**  
**Co-op Month Celebration**  
Cherry Rock Farms  
Brandon, SD

**AUG. 2-4**  
**Arlington Days**  
Arlington, SD  
605-690-5717  
Follow Arlington Days, South Dakota on Facebook & Instagram

**AUG. 3**  
**Prairie Fest**  
Armour, SD

**AUG. 3**  
**Bloomin' Quilt Party**  
12-5 p.m.  
Bennett Barn  
Aurora, SD  
605-690-3246

**AUG. 6-8**  
**Minnesota Farmfest**  
Gilfillan Estate  
Morgan, MN

**AUG. 6-8**  
**IDEAg's Farmfest**  
8 a.m.-4 p.m.  
Redwood County, MN  
651-316-4369

**AUG. 7**  
**Ag Appreciation Day**  
W.H. Lyon Fairgrounds  
Sioux Falls, SD

**AUG. 7-9**  
**Renville County Fair**  
Renville County Fairgrounds  
Bird Island, MN

**AUG. 8**  
**Renville County Family-a-Fair Night (Renville-Sibley Cooperative Power Association Members)**  
Renville County Fairgrounds  
Bird Island, MN

**AUG. 11**  
**Czech Heritage Festival**  
Bechn, MN

**AUG. 10**  
**Camaro Fun Days**  
10 a.m.-2:30 p.m.  
Pioneer Park  
Brookings, SD

To have your event listed on this page, send complete information, including date, event, place and contact to your local electric cooperative. Include your name, address and daytime telephone number. Information must be submitted at least eight weeks prior to your event. Please call ahead to confirm date, time and location of event.

**Note: Please make sure to call ahead to verify the event is still being held.**